

HXL 6435YM



3.5 Ton Low Profile Scissor Lift

With patented mechanical synchronization device



Technical Features



Control

Control cabinet with UP, Down button, main power switch, emergency stop button, power indication light and buzzer



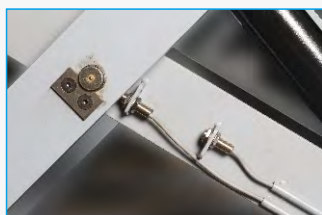
Drive-on Ramp

Drive-on ramps which can be locked on level as platform extension



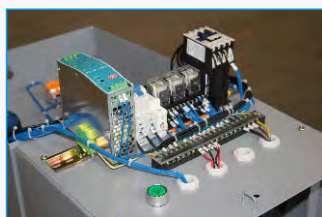
Synchronization

Patented mechanical synchronization device which stops lowering while any of two platforms are blocked



Limit Switch

Sensor type up limit switch and lowering limit switch with buzzer warning



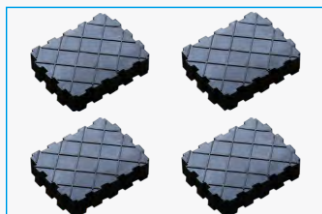
One-key Leveling

One-key leveling button inside control box makes leveling of platforms simple



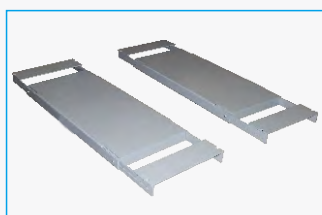
Grease Point

Grease point on all shafts to reduce wear out of components



Rubber Pad

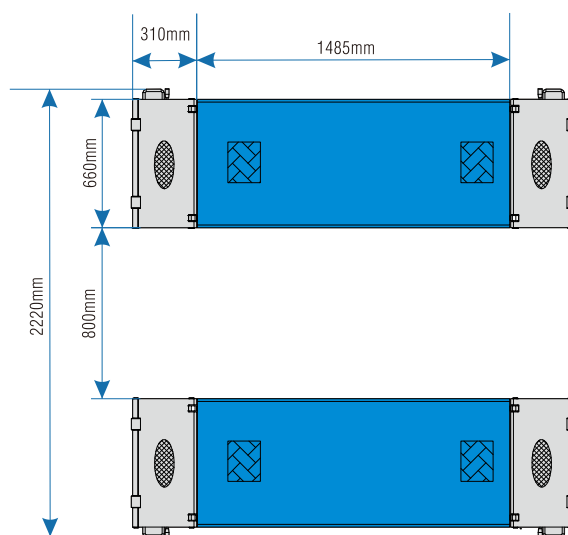
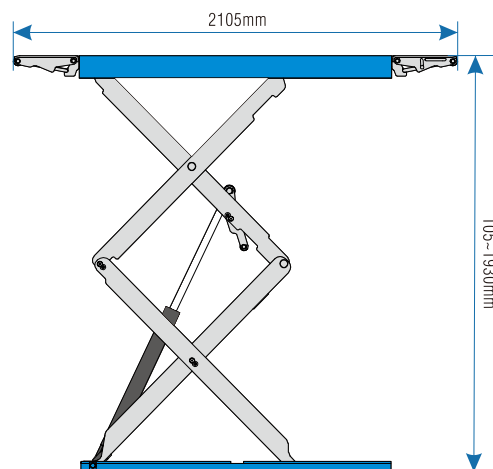
A set of four rubber pads as standard accessory



Draw-out Extension

Dual side draw-out extension version is available for in-ground installation

Technical Drawing



Technical Data

| | |
|----------------------------|--------------------------------|
| Lifting Capacity | 3,500kg |
| Min. Height | 105mm |
| Max. Lifting Height | 1930mm |
| Platform Length | 1,485mm |
| Platform Width | 660mm |
| Distance between Platforms | 800mm |
| Lifting/Lowering Time | 55Sec./45Sec. |
| Motor Power | 2.2kW |
| Power Supply | 380V/50Hz/3Ph 220V/50Hz/1Ph |